



CHC40225 Certificate IV in School Based Education Support

Virtual • Fee-Free* • Nationally Recognised • RTO 2401

Table Of Contents

▶	Our Mission & Vision	3
▶	Course Overview	4
▶	Why Choose This Course?	5
▶	Key Features	6
▶	Frequently Asked Questions	7

Our Mission & Vision

Our Mission

Through registered training we deliver qualifications that are quality, through our intuitive service we improve people performance and capabilities on the job.



Our Vision

We develop people, we improve business.

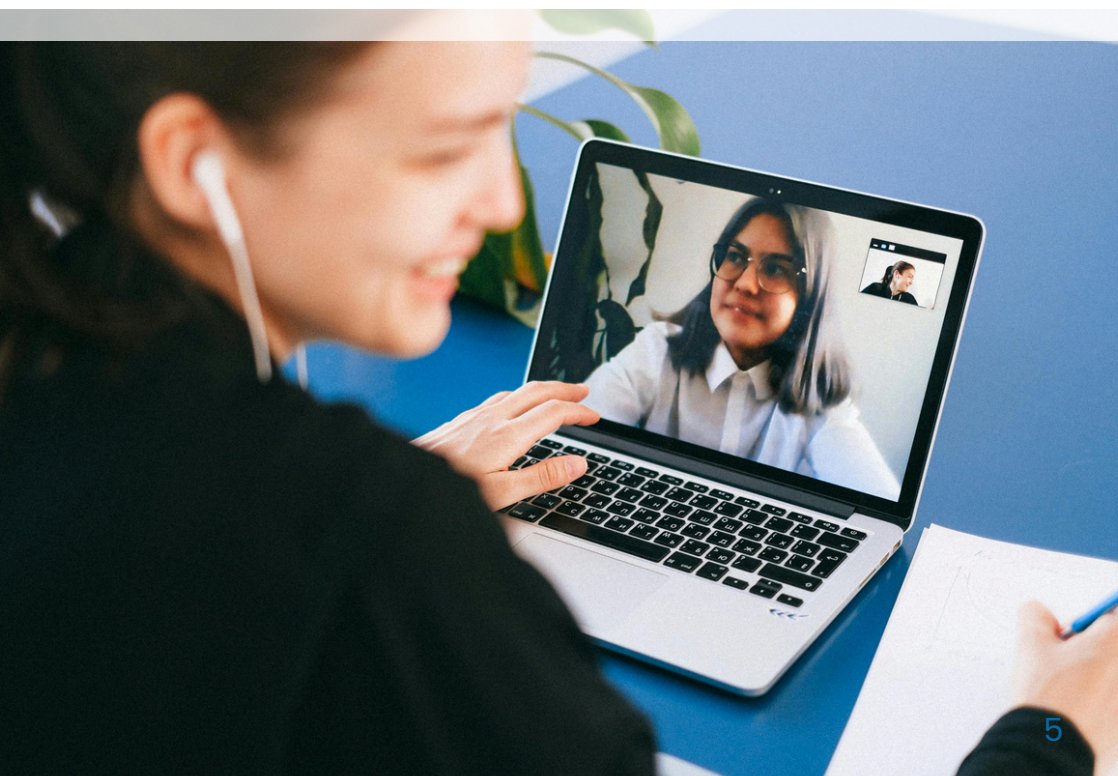


Course Overview

This qualification reflects the role of Education Support Workers who assist teachers and support student learning in classroom settings. You will learn inclusion strategies, literacy and numeracy support, behaviour support, and methods to work with students requiring additional learning needs. A mandatory 100-hour supervised school placement forms part of this qualification.

Why Choose This Course?

Delivered entirely in a live virtual classroom, this program offers flexibility while maintaining real-time engagement with experienced trainers. It prepares you for meaningful work in WA primary and secondary schools and may support future university study in education.





Key Features

- » Live virtual classroom delivery
- » Mandatory 100-hour placement in a WA primary or secondary school
- » Support for literacy, numeracy, behaviour and inclusion
- » Specialised units for ASD and disabilities
- » Nationally recognised qualification (RTO 2401)
- » Fee-Free eligibility for WA residents*
- » Clustered delivery aligned to real school tasks
- » Assessment support and feedback via Moodle

Frequently Asked Questions

Who is this course for?

Adult learners seeking flexible study and a pathway into Education Support roles in primary or secondary schools.

How long is the course?

Approximately 745 total hours including 390 hours of virtual delivery, 240 hours of study and assessment, and 100 hours of work placement.

Is the course really fee-free?

Yes, for eligible WA residents under Priority Industry Training and Job Seeker programs. Only one funded course may be taken at a time.

What is involved in the work placement?

At least 100 hours in a WA school (SSI books 120 hours to ensure compliance). After-school care does not meet requirements.

What assessments will I complete?

Knowledge questions, projects, workplace observations, scenarios, behaviour plans, resource development and First Aid.

Can I apply for credit or RPL?

Yes. Credit Transfer and Recognition of Prior Learning are available with evidence of competence.

What support will I receive?

Trainers provide detailed feedback through Moodle. Optional workshops and learning support are available throughout the course.

**The student tuition fees are indicative only and are subject to change given individual circumstances at enrolment. Additional fees may apply such as resource fees.*

For Further Information

Contact Us :



+61 (8) 6143 2180



info@skillstrategies.edu.au



www.skillstrategies.edu.au